

**STAINLESS STEEL DUAL PLATE CHECK VALVE FKM SEAT**

**PRODUCT EVOLUTION**



**Be careful, our check valves Ref.372 are changing**

**We currently have 2 different types available (according to DN)  
with different connection**

**At the end, only the new types Page 8 compatible Class 150 PN20  
for all DN will be available**

## STAINLESS STEEL DUAL PLATE CHECK VALVE FKM SEAT

Stainless steel dual plate check valve for chemical and pharmaceutical industries, petrochemical industries and hydraulic installation.

Stainless steel body and disc with FKM vulcanized seat.

Wafer type with short length and with a hoisting eye from DN200 to 600 for easy installation.



**Size :** DN 50 to 600

**Connection :** Between flanges PN10/16, PN25 or Class 150 (PN20)  
According to DN

**Min Temperature :** -10°C

**Max Temperature :** +180°C

**Max Pressure :** 16 Bars up to DN300

**Specifications :** FKM vulcanized seat

Horizontal or vertical position with ascendant fluid

Wafer type

Hoisting eye from DN200 to 600

Weak headloss

**Materials :** Stainless steel ASTM A351 CF8M body

**STAINLESS STEEL DUAL PLATE CHECK VALVE FKM SEAT**

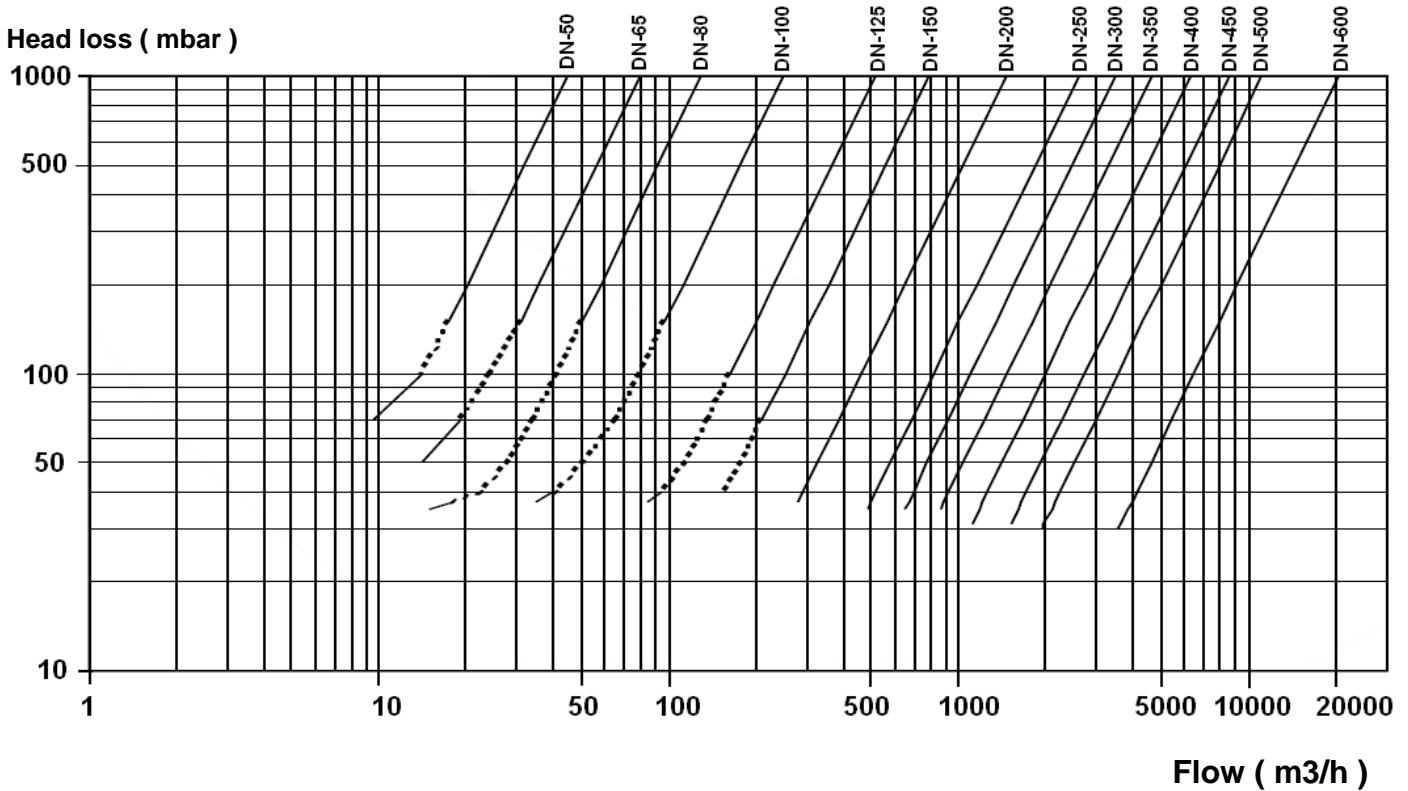
**SPECIFICATIONS :**

- Vulcanized gasket
- Hoisting eye from DN200 to 600
- Short length
- Anti-corrosion stainless steel spring
- PTFE bushing
- Weak head loss
- Vertical position with ascendant fluid or horizontal position ( respect the flow direction indicated by the arrow )
- Between flanges PN10/16, PN25 or Class 150 PN20 according to DN
- Minimum backpressure for tightness : 2 bars

**USE :**

- Chemical and pharmaceutical industries, petrochemical industries, hydraulic installation
- Min and max Temperature Ts : - 10°C to + 180°C
- Max Pressure Ps : 16 bars up to DN300 included and 10 bars over
- **Do not use with pulsatory speed**

**HEAD LOSS GRAPH :**



**OPENING PRESSURE ( in mbar ) :**

DN	50	65	80	100	125	150	200	250	300
Horizontal position	230	94	190	280	160	79	41	38	31
Vertical position ascend. fluid	260	114	230	320	180	95	57	58	56

**STAINLESS STEEL DUAL PLATE CHECK VALVE FKM SEAT**

**RANGE :**

- Dual plate check valve with Stainless steel body and disc FKM gaskets **Ref. 372** From DN50 to 600

**CONNECTION :**

DN	50	65	80	100	125	150	200	250	300	350	400	450	500	600
PN	PN10/40			PN25/40			PN25	PN10/16						
Ref.	372050	372065	372080	372100*	372125*	372150	372200	372250*	372300*	372350*	372400*	372450*	372500*	372600*

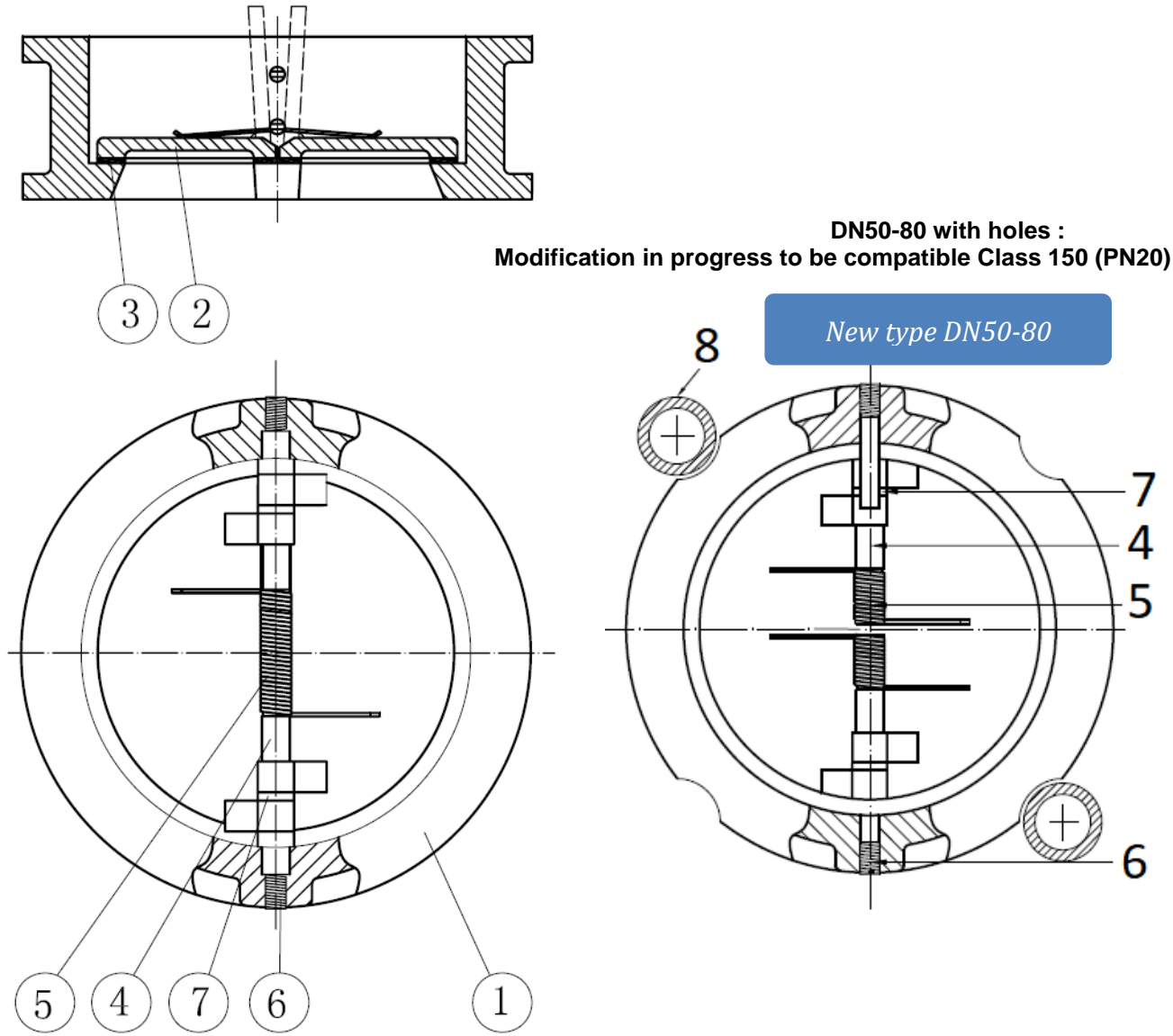
DN	100	125	150	200
PN	PN10/16			
Ref.	372101*	372126*	372151*	372201*

\*Between flanges Class 150 PN20 possible

**PRODUCT EVOLUTION : AT THE END ALL THE DN WILL BE COMPATIBLE CLASS 150 (PN20)**

**STAINLESS STEEL DUAL PLATE CHECK VALVE FKM SEAT**

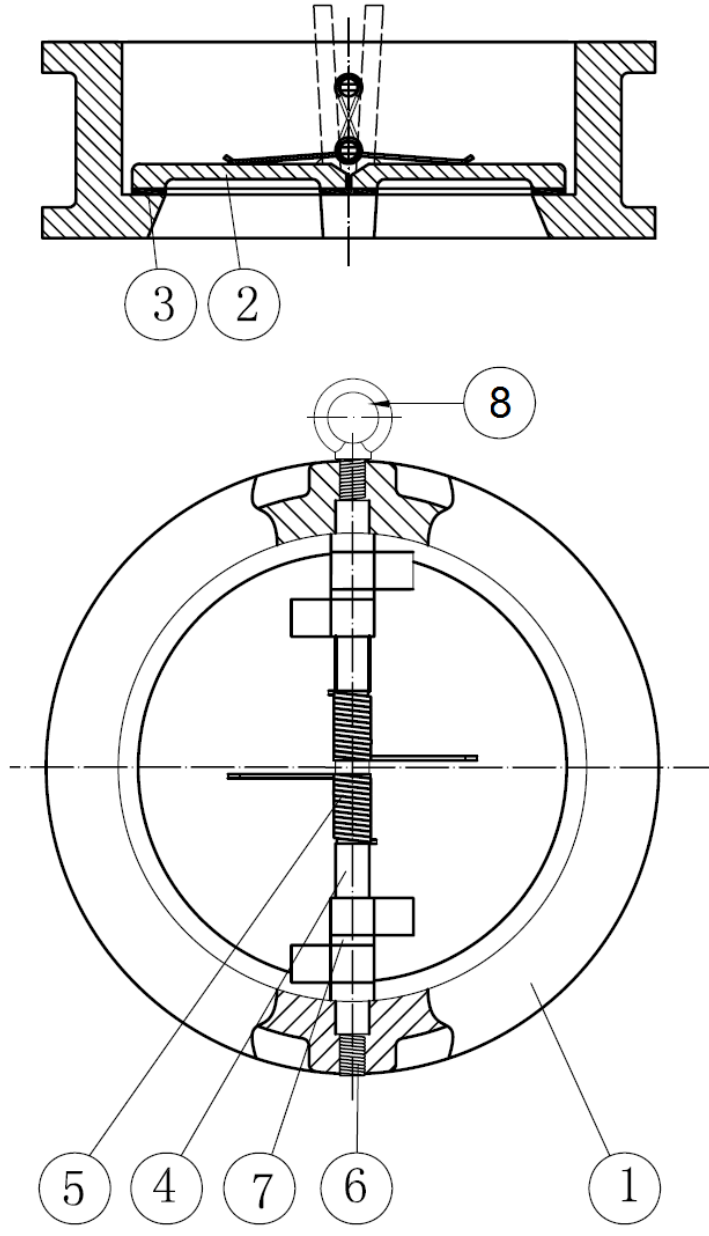
MATERIALS DN50-80 :



Item	Designation	Materials
1	Body	ASTM A351 CF8M
2	Disc	
3	Seat	FKM
4	Shaft	AISI 316
5	Spring	
6	Screw	
7	Spacer	PTFE
8 (only new type DN50)	Centering ring PN10/16	PPR

**STAINLESS STEEL DUAL PLATE CHECK VALVE FKM SEAT**

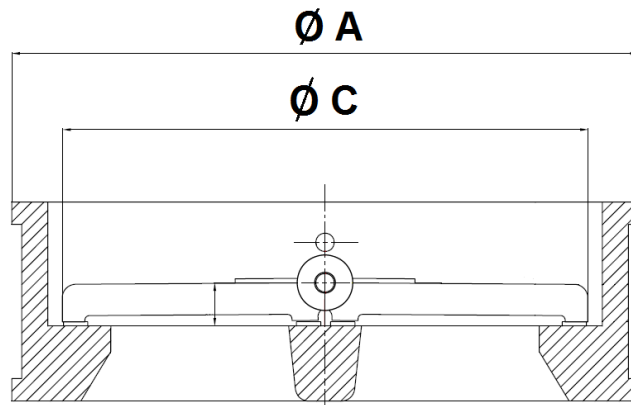
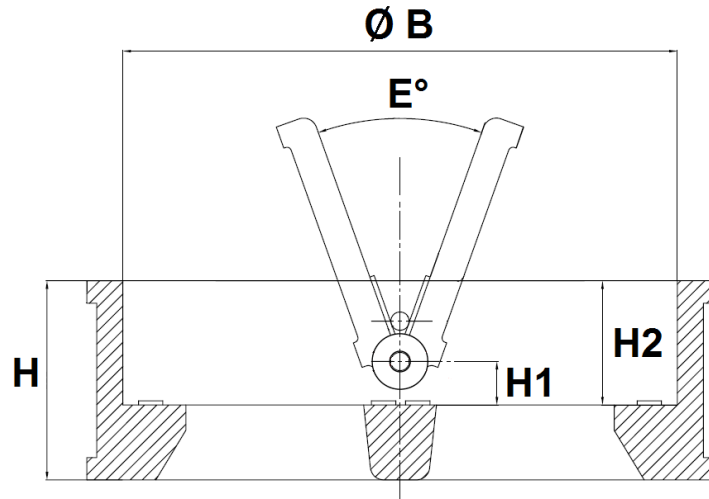
MATERIALS DN100 - 600 :



Item	Designation	Materials
1	Body	ASTM A351 CF8M
2	Disc	
3	Seat	FKM
4	Shaft	AISI 316
5	Spring	
6	Screw	
7	Spacer	PTFE
8	Hoisting eye (from DN200 to 600)	AISI 304

**STAINLESS STEEL DUAL PLATE CHECK VALVE FKM SEAT**

SIZE ( in mm ) :

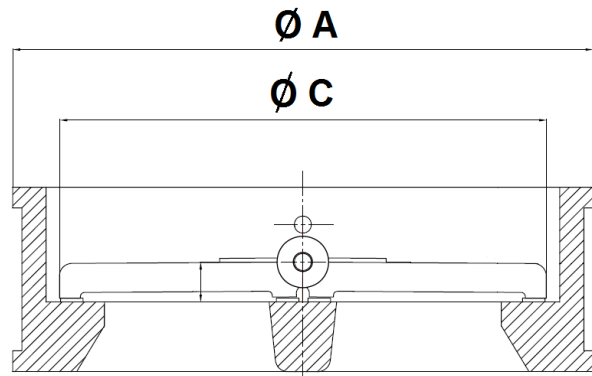
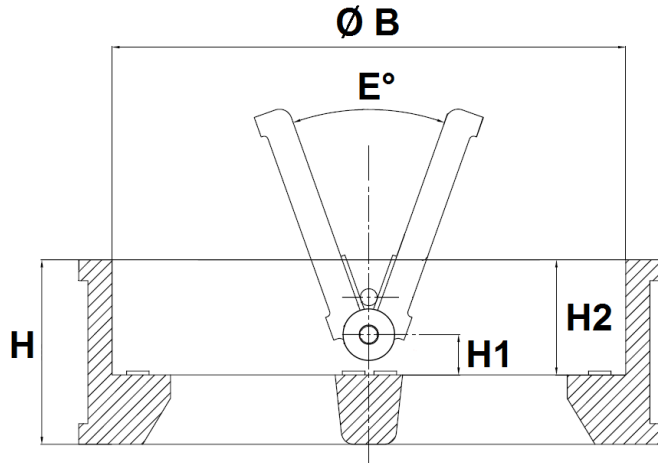
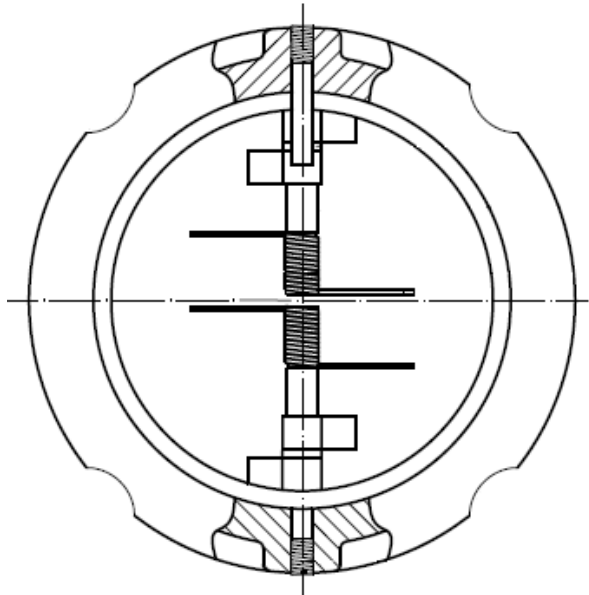


DN	50	65	80	100	125	150	200	250	300	350	400	450	500	600
H	54	54	57	64	70	76	95	108	144	184	191	203	213	222
H1	14.4	16.9	19.9	21	22.3	22.5	28	34	37	35	37.5	42.2	39.5	48.5
H2	43	43	45	47	51	54	69	71	100	120	123	122.6	132	138.5
Ø A	109	129	144	170	196	226	285	330	380	440	491	541	596	698
Ø B	70.5	83.5	91.5	115.5	142.5	169.5	220.5	275.5	325.5	356	406	467	514	616
Ø C	60.5	75.8	80.5	104.5	130.3	155.9	201.2	257.2	303.3	345.9	388.6	431.2	486.8	607.6
E°	0°	0°	0°	0°	0°	0°	0°	0°	0°	20°	20°	20°	25°	25°
Weight ( Kg )	1.84	2.4	3.35	5.05	6.68	9.6	18.07	26.9	38.9	80	106	128	158	225
Ref.	372050	372065	372080	372100	372125	372150	372200	372250	372300	372350	372400	372450	372500	372600

**STAINLESS STEEL DUAL PLATE CHECK VALVE FKM SEAT**

**SIZE ( in mm ) NEW TYPE :**

**DN50-80 : With 4 holes :**



DN	50	65	80	100	125	150	200
H	54	54	57	64	70	76	95
H1	14.4	16.9	19.9	21	22.3	22.5	28
H2	43	43	45	47	51	54	69
Ø A	109	129	144	164	194	220	275
Ø B	70.5	83.5	91.5	115.5	142.5	169.5	220.5
Ø C	60.5	75.8	80.5	104.5	130.3	155.9	201.2
E°	0°	0°	0°	0°	0°	0°	0°
Weight ( Kg )	1.84	2.4	3.35	5.05	6.68	9.6	18.07
Ref.	372050	372065	372080	372101	372126	372151	372201



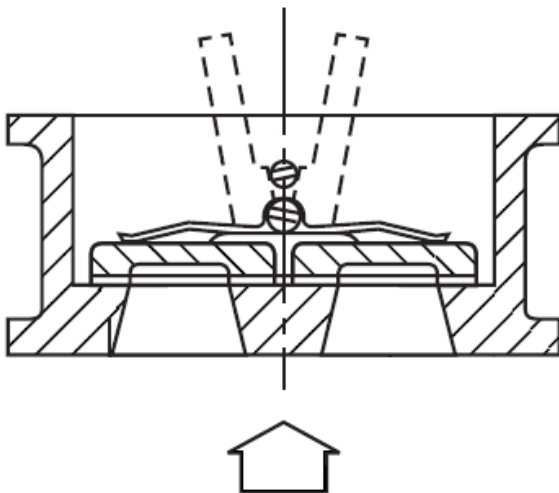
**STAINLESS STEEL DUAL PLATE CHECK VALVE FKM SEAT**

**STANDARDS :**

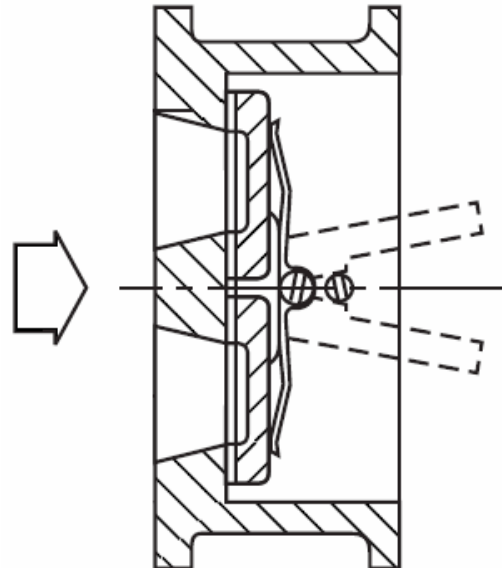
- Manufacturer certified ISO 9001 : 2015
- DIRECTIVE 2014/68/EU : CE N° 0035  
Risk Category III Module H
- Certificate 3.1 on request
- Designing according to API 594
- Pressure tests according to API 598, table 6
- Length according to EN 558 Series 50
- Between flanges according to EN 1092-1 PN10/16/25

**INSTALLATION POSITIONS :**

**Vertical position ( ascendant fluid )**



**Horizontal position**



**ADVICE :** Our opinion and our advice are not guaranteed and SFERACO shall not be liable for the consequences of damages. The customer must check the right choice of the products with the real service conditions.