

CAST IRON SIGHT GLASS SKT 6

FEATURES

The SKT6 sight glass is dedicated to the visual control and inspection of flow in pipes of standard low pressure and no corrosive fluids, like water. The SKT6 has a double windows construction and screwed connections. This controller is CE approved.

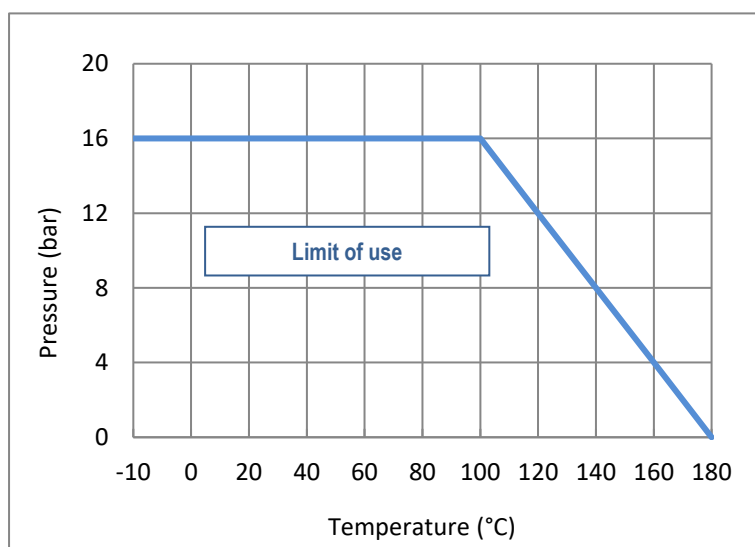
AVAILABLE MODELS

DN 1/2" to 2".
BSP screwed connections.



LIMITS OF USE

Max allowed fluid pressure : PS	16 bar
Max allowed fluids temperature : TS	-10°C / +180°C
Room temperature	-10°C / +60°C



REGULATIONS AND STANDARDS OF CONSTRUCTION

Item	Standard	ON	Item	Standard
Pressure equipment directive 2014/68	<u>1/4" to 1"</u> : excluded		Size	EN 12516-1
	<u>1"1/4 to 2"</u> : category I	TÜV 0035	Material Certificate	EN 10204 § 3.1
Cast iron materials	EN 1503-3			

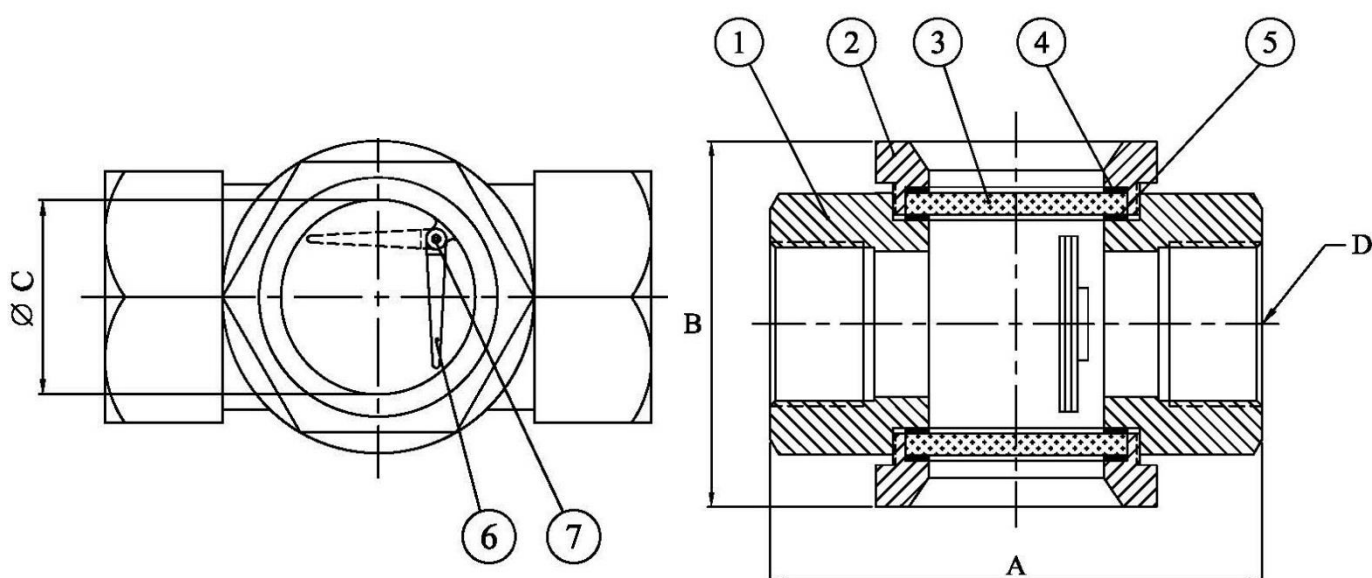
Information given as an indication only, and subject to possible modifications

	SECTORIEL S.A. 45 rue du Ruisseau 38290 SAINT QUENTIN-FALLAVIER - FRANCE Tél : +33 4 74 94 90 70 - Fax : +33 4 74 94 13 95 www.sectoriel.com / Email : sectoriel@sectoriel.fr	Pages	1/3
		Ref.	FT2220 ENG
		Rev.	08
		Date	09/2023

CAST IRON SIGHT GLASS SKT 6

CONSTRUCTION

N°	Item	Quantity	Material
1	Body	1	Cast iron EN-GJS-400
2	Cover	2	Cast iron EN-GJS-400
3	Window	2	Soda lime
4	Top gasket	2	PTFE
5	Bottom gasket	2	PTFE
6	Flap	1	Stainless steel ANSI 304
7	Axe	1	Stainless steel ANSI 304



DIMENSIONS (mm)

DN	1/2"	3/4"	1"	1" 1/4	1" 1/2	2"
A	75	90	90	120	120	140
B	70	75	83	110	110	125
C	22	30	30	42	42	51
Weight (kg)	0.7	1	1.2	2.1	2.1	3.3

Information given as an indication only, and subject to possible modifications



SECTORIEL S.A.
 45 rue du Ruisseau
 38290 SAINT QUENTIN-FALLAVIER - FRANCE
 Tél : +33 4 74 94 90 70 - Fax : +33 4 74 94 13 95
www.sectoriel.com / Email : sectoriel@sectoriel.fr

Pages	2/3
Ref.	FT2220 ENG
Rev.	08
Date	09/2023

CAST IRON SIGHT GLASS SKT 6

MOUNTING AND MAINTENANCE


- The sight glass can be installed in any position. In vertical position with downstream flow, the flap does not work.
- Downstream a drainer working by discharge steam trap, Respect a distance of 1 meter between this one and sight glass to avoid the thermal shocks on glasses.
- Before installation or maintaining, shut off the line using upstream and downstream valves.
- Remove the pressure inside and drain the pipe.
- If the pipe is warm, wait the complete cooling at room temperature.
- Wear protections equipments adapted to this kind of operation (gloves and glasses).
- Remove the two glass covers and remove the glasses.
- Clean the glasses and the inner part of the body.
- Verify the state of the glasses and check any starting of chemical corrosion or mechanical erosion. Replace it if necessary.
- Screw the controller on the piping by using an adapted sealing.
- Select the position of the sight glass on the line in order to make it visible for the operators.
- Bring back the installation in service.

SPARE PARTS

Spare parts kits including 1 glass item (3) and 2 gaskets items (4) and (5).

DN	∅ glass (mm)	thickness (mm)	Code
<u>1/2"</u>	30	10	981070
<u>3/4" - 1"</u>	38	10	981071
<u>1" 1/4 - 1" 1/2</u>	55	10	981072
<u>2"</u>	63	10	981073

Information given as an indication only, and subject to possible modifications

	SECTORIEL S.A. 45 rue du Ruisseau 38290 SAINT QUENTIN-FALLAVIER - FRANCE Tél : +33 4 74 94 90 70 - Fax : +33 4 74 94 13 95 www.sectoriel.com / Email : sectoriel@sectoriel.fr	Pages	3/3
		Ref.	FT2220 ENG
		Rev.	08
		Date	09/2023