

# C161 SIGHT GLASS

## FEATURES

The C161 sight glass is designed for the visual inspection of flow for fluids inside piping. Made of brass or bronze, it is especially designed for usual applications without any risk of corrosion. Of double-window type, C161 is also equipped with a movable ball for inspecting transparent fluids. Do not use this sight glass on a vertical piping with ascending flow.

## AVAILABLE MODELS

DN15 to DN50 diameters.  
G thread connections.

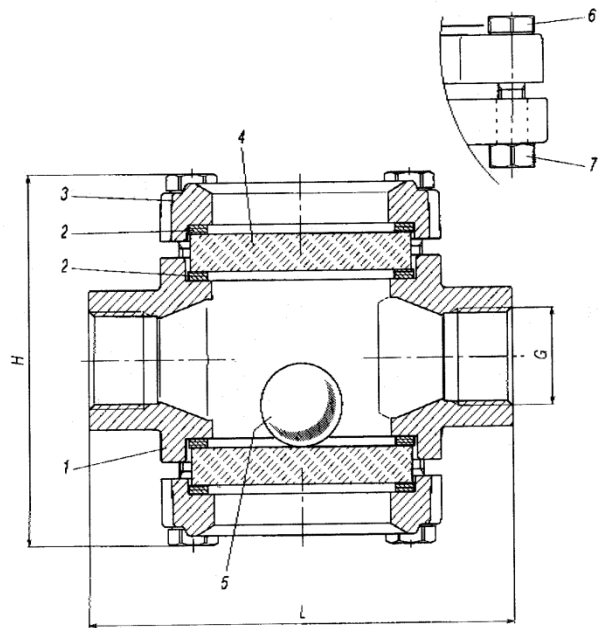


## LIMITS OF USE

Fluid WP:	16 bar
Fluid WT° (standard ball):	- 5°C / + 80°C
Fluid WT° (PTFE ball):	- 5°C / + 120°C

## DIMENSIONS (mm) AND CONNECTIONS

DN	15	20	25	32	40	50
G	1/2"	3/4"	1"	1"1/4	1"1/2	2"
L	95	100	107	126	137	170
H	80	90	92	112	118	140



## CONSTRUCTION

No.	Item	Quantity	1/2" to 1" material	1" 1/4 à 2" material
1	Body	1	CW 617 N brass	CC 491 K bronze
2	Window gasket	4	Fibre	
3	Cover	2	CW 617 N brass	
4	Window	2	Toughened glass	
5	Ball	1	Moplen (PTFE option)	
6	Screw	8	Nickel-plated steel	
7	Nut	8	Nickel-plated steel	

Information given as an indication only, and subject to possible modifications

	SECTORIEL S.A. 45 rue du Ruisseau 38290 SAINT QUENTIN-FALLAVIER – FRA NCE Telephone: +33 4 74 94 90 70 - Fax: +33 4 74 94 13 95 <a href="http://www.sectoriel.com">www.sectoriel.com</a> / Email : <a href="mailto:sectoriel@sectoriel.fr">sectoriel@sectoriel.fr</a>	Pages	1/2
		Ref.	FT2215 ENG
		Rev.	04
		Date	09/2023

# C161 SIGHT GLASS

## DIRECTIVES AND MANUFACTURING STANDARDS

OBJET	Standard	ON	OBJET	Standard
Pressure Equipment Directive 2014/68/EC	<b>DN 15 to 20:</b> not subject		Brass and bronze grades	EN 1503-4
	<b>DN 25 to 50:</b> category II	1115	Size	EN 12516-4
G thread	ISO 228		Final test	EN 12266

## ASSEMBLY AND SERVICING

- Before any installation, cut-off the piping upstream and downstream.
- Depressurize and drain the piping.
- Wait for it to cool down to ambient temperature.
- Wear the safety equipment required for this type intervention (gloves and goggles).
- Screw the sight glass onto the piping using a suitable gasket.
- Position the device so as to make the windows visible to operators.
- Put the installation back in service.

### **Servicing:**

- Follow the safety instructions below.
- Remove the covers (reference marks 3) and then the windows (reference mark 4).
- Clean the internal parts.
- Check the state of the window, detect any beginning of corrosion or erosion.
- Replace the windows and the gasket, if necessary.

## SPARE PARTS

DN	Kit including 1 x window (reference mark 4) and 2 x gaskets (reference mark 2)			Ball
	window Ø (mm)	Thickness (mm)	Code	Code
1/2"	49.3	9.8	981011	981008
3/4" – 1"	55.5	9.8	981012	981009
1"1/4 - 1"1/2	66.5	11.8	981013	981009
2"	79.2	14.7	981014	981009

## OPTION

PTFE ball to use above 80°C

DN	Code
1/2"	981006
3/4" – 1"	981007
1"1/4 - 1"1/2	981007
2"	981007

Information given as an indication only, and subject to possible modifications

	SECTORIEL S.A. 45 rue du Ruisseau 38290 SAINT QUENTIN-FALLAVIER – FRA NCE Telephone: +33 4 74 94 90 70 - Fax: +33 4 74 94 13 95 <a href="http://www.sectoriel.com">www.sectoriel.com</a> / Email : <a href="mailto:sectoriel@sectoriel.fr">sectoriel@sectoriel.fr</a>	Pages	2/2
		Ref.	FT2215 ENG
		Rev.	04
		Date	09/2023