

EPOXY CAST IRON Y STRAINER FLANGED PN 10/16 ACS

Cast iron Y Strainer flanged PN16 for the filtration of drinking water network, watering, water treatment and irrigation.
Y Strainer with removable stainless steel screen and bolted bonnet.
Removable draining cap threaded BSP allowing an installation of a draining valve (from DN50 to DN400).



Size : DN40 to DN400
Connection : Flanges RF PN10/16
Min Temperature : -10°C
Max Temperature : +80°C
Max Pressure : 16 Bars
Specifications : Removable stainless steel screen
Bolted bonnet with draining cap
Epoxy painting

Materials : Cast iron EN GJL-250

EPOXY CAST IRON Y STRAINER FLANGED PN 10/16 ACS

SPECIFICATIONS :

- Removable stainless steel filter
- R.F. flanges PN10/16
- Horizontal or vertical position with descendant fluid (respect the flow direction indicated by the arrow)
- Mesh 1.5 mm from DN40 to 80, 2 mm from DN100 to 300 and 3 mm from DN350 to 400
- Bolted bonnet with draining cap threaded BSP
- Possible to equip with a draining valve (Ref.528)
- Epoxy painting 150 µ thickness, blue color RAL 5005

USE :

- For watering, water treatment and irrigation
- Min Temperature Ts : - 10°C
- Max Temperature Ts : + 80°C
- Max Pressure Ps : 16 bars for PN16 types and 10 bars for PN10 types

FLOW COEFFICIENT Kv (M3 / h) :

DN	40	50	65	80	100	125	150	200	250	300	350	400
Kv (m3/h)	40	41	71	94	136	188	253	505	1017	1338	1509	1961

HEAD LOSS CALCULATIONS :

$$\Delta p = (Q / Kv)^2 \times SG$$

Q : flow in m³/h

Δp : Head loss in bar

SG : Specific gravity (= 1 for water)

Kv : Volume of water in m³/h, that will flow through a given restriction or valve opening with a pressure drop of 1 bar at 20°C)

EPOXY CAST IRON Y STRAINER FLANGED PN 10/16 ACS

RANGE :

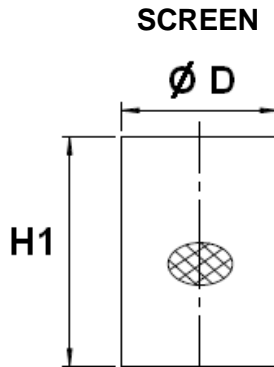
- Y strainer R.F. flanges PN10/16 from DN40 to DN400 **Ref.233**
- Y strainer R.F. flanges PN10/16 with draining valve NF from DN50 to DN 300 **Ref.233053 to 233304**
- Draining valve NF Male – Female **Ref. 528**

Example of filter with NF draining valve :



EPOXY CAST IRON Y STRAINER FLANGED PN 10/16 ACS

REPAIRABILITY :



CAP O-RING GASKET

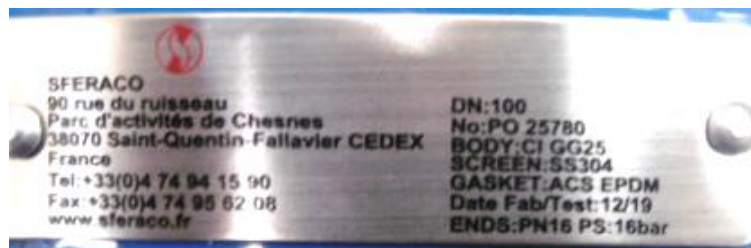


BONNET O-RING GASKET



		DN	40	50	65	80	100	125	
Screen	Size	Ø D x H1	47 x 83	57 x 97	76 x 119	91 x 139	112 x 157	137 x 194	
	Filtration	Mesh	1.5				2		
	Ref.		9802700	9802701	9802702	9802703	9802704	9802705	
Cap gasket	Size	Ø Bi x Ø Bt	-	13x2.65	19x2.65			25x2.65	
	Ref		-	9802732	9802733			9802734	
Bonnet gasket	Size	Ø Di x Ø Dt	50x4	63x5	85x5	104x5.1	125x6	150x6	
	Ref.		9802720	9802721	9802722	9802723	9802724	9802725	

		DN	150	200	250	300	350	400	
Screen	Size	Ø D x H1	163 x 234	218 x 311	264 x 359	318 x 409	382 x 487	427 x 537	
	Filtration	Mesh	2				3		
	Ref.		9802706	9802707	9802708	9802709	9802710	9802711	
Cap gasket	Size	Ø Bi x Ø Bt	25x2.65		29x2.65		47x3.55		
	Ref		9802734		9802735		9802736		
Bonnet gasket	Size	Ø Di x Ø Dt	175x7	224x7	280x7	330x8.6	392x10	438x10	
	Ref.		9802726	9802727	9802728	9802729	9802730	9802731	

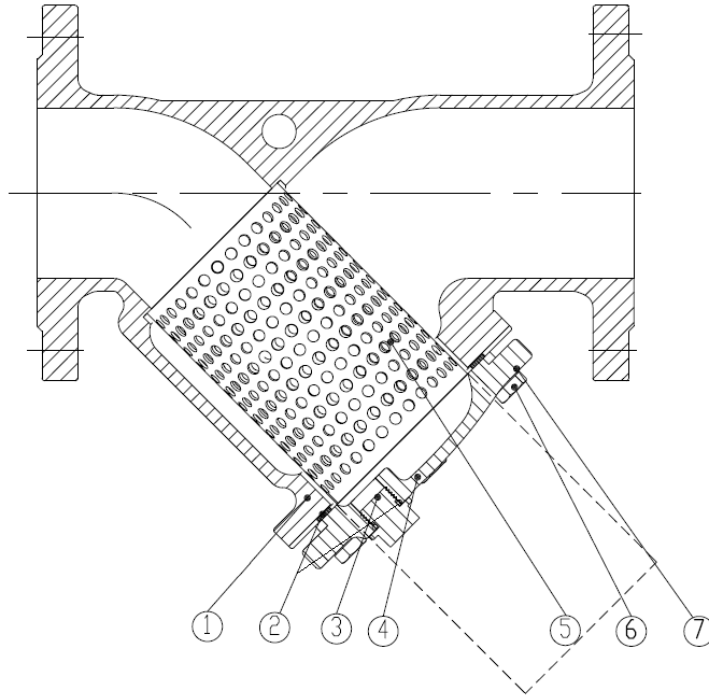


Be careful, the codes above relate to the current model with the identification plate above (for spare parts of another version, please contact us)

Sferaco 90 rue du Ruisseau 38297 St Quentin Fallavier Tel: + 33 (0) 474.94.15.90 Fax: + 33 (0) 474.95.62.08 Internet: www.sferaco.com E-mail : info@sferaco.fr

EPOXY CAST IRON Y STRAINER FLANGED PN 10/16 ACS

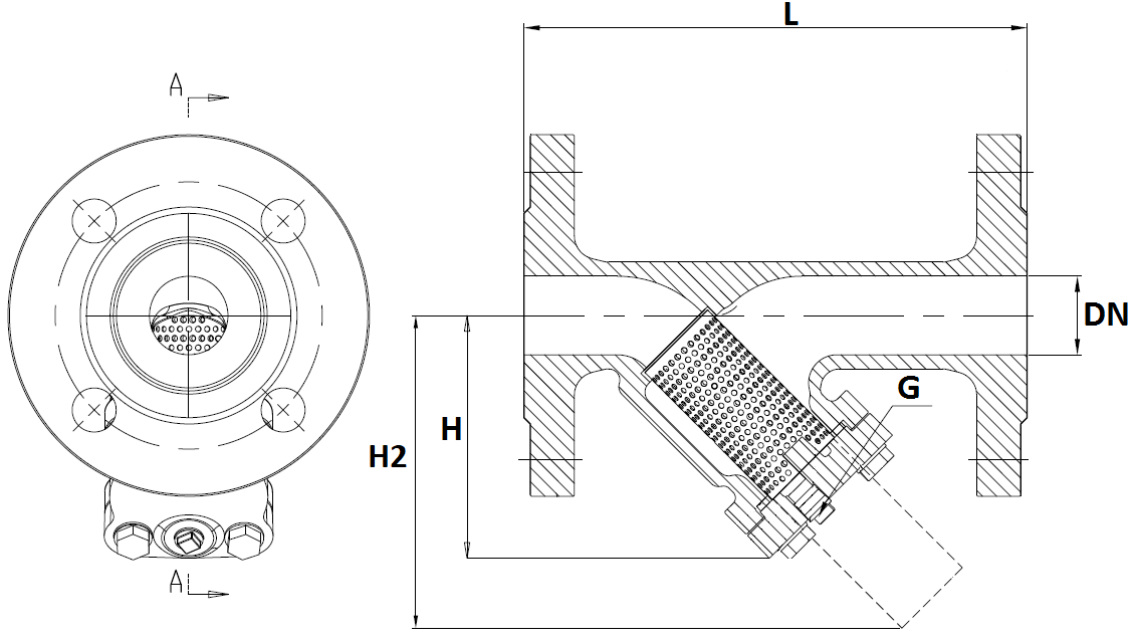
MATERIALS :



Item	Designation	Materials DN40-300	Materials DN350-400
1	Body	Cast iron EN GJL-250	Ductile iron EN GJS-500-7
2	O Ring (bonnet and drain)	EPDM ACS	
3	Drain (from DN50 to 400)	AISI 304	
4	Bonnet	Cast iron EN GJL-250	Ductile iron EN GJS-500-7
5	Screen	AISI 304	
6	Screw		
7	Washer		

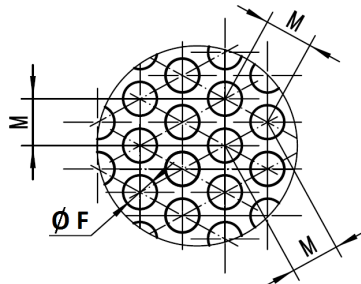
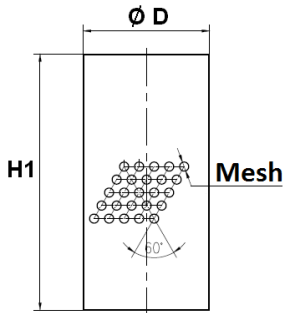
EPOXY CAST IRON Y STRAINER FLANGED PN 10/16 ACS

SIZE (in mm) :



Screen size :

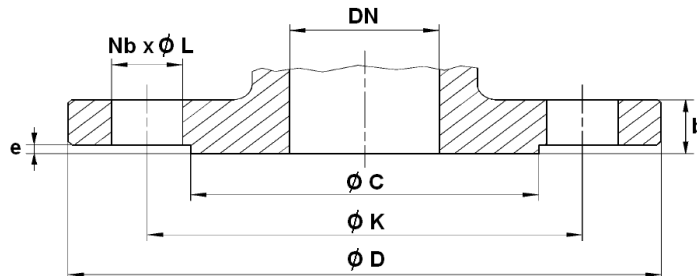
Bonnet gasket size :



DN	40	50	65	80	100	125	150	200	250	300	350	400
L	200	230	290	310	350	400	480	600	730	850	980	1100
H	111	137.2	164.6	190	222.9	261.3	306.9	377.9	438.2	510.9	606	692.3
H2	154.5	180.7	225.3	264.8	294.9	357.6	429.2	558.3	657	768.6	890.2	1009.4
G (Drain)	No	3/8"	1/2"	1/2"	1/2"	3/4"	3/4"	3/4"	1"	1"	2"	2"
Ø D	47	57	76	91	112	137	163	218	264	318	382	427
H1	83	97	119	139	157	194	234	311	359	409	487	537
Mesh (Ø F)	1.5				2				3			
M	3				4				5.5			
Ø D1 x Ø d	50x4	63x5	85x5	104x5.1	125x6	150x6	175x7	224x7	280x7	330x8.6	392x10	438x10
Weight (Kg)	5.67	8.5	11.7	15.2	21.9	30.8	43.9	76	115	169.5	223	320
Ref.	233040	233050	233065	233080	233100	233125	233150	233200	233250	233300	233350	233400

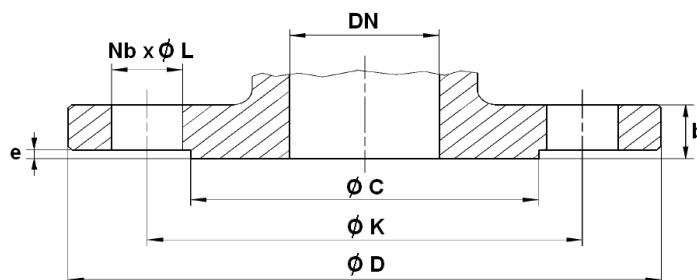
EPOXY CAST IRON Y STRAINER FLANGED PN 10/16 ACS

FLANGES SIZE PN10 (in mm) :



PN	PN10				
DN	200	250	300	350	400
Ø C	266	319	370	429	480
Ø D	340	405	460	520	580
Ø K	295	350	400	460	515
Nb x Ø L	8 x 23	12 x 23	12 x 23	16 x 23	16 x 28
b	30	32	32	26.5	28
e	3	3	4	4	4
Ref.	233200	233250	233300	233350	233400

FLANGES SIZE PN16 (in mm) :



PN	PN10/16							PN16				
DN	40	50	65	80	100	125	150	200	250	300	350	400
Ø C	84	99	114	132	156	184	211	266	319	370	429	480
Ø D	150	165	185	200	220	250	285	340	405	460	520	580
Ø K	110	125	145	160	180	210	240	295	355	410	470	525
Nb x Ø L	4 x 19	4 x 19	4 x 19	8 x 19	8 x 19	8 x 19	8 x 23	12 x 23	12 x 28	12 x 28	16 x 28	16 x 31
b	18	20	20	22	24	26	26	30	32	32	26.5	28
e	3	3	3	3	3	3	3	3	3	4	4	4
Ref.	233040	233050	233065	233080	233100	233125	233150	233201	233251	233301		

EPOXY CAST IRON Y STRAINER FLANGED PN 10/16 ACS

STANDARDS :

- Manufacturer certified ISO 9001 : 2015
- DIRECTIVE 2014/68/EU : Products excluded (article 4, § 3)
- Pressure tests according to ISO 5208
- Length according to EN 558 Series 1 (DIN 3202 F1 – NF 29354)
- Flanges R.F. according to EN 1092-2 PN10/16
- French water agreement **A.C.S. N° 19 ACC LY 827**

INSTALLATION POSITIONS :

Vertical position (descendand fluid)



Horizontal position



ADVICE : Our opinion and our advice are not guaranteed and SFERACO shall not be liable for the consequences of damages. The customer must check the right choice of the products with the real service conditions.