

2 PIECES SPLIT BODY CARBON STEEL BALL VALVES FLANGED CLASS 150 PN20

2 pieces carbon steel Split body ball valve with full bore for Chemical industries, petrochemical industries, hydraulic installation, heating, water distribution, compressed air.

PTFE filled with 15% glass seat for a temperature up to +180°C.

Double antistatic device.

Thanks to the ISO 5211 plate, an actuator can be installed on the valve.

Certificate

3.1



Size : DN15 to DN150 (NPS 1/2" to 6")

Connection : Flanged Class 150 PN20 RF

Min Temperature : -10°C

Max Temperature : +180°C

Max Pressure : 20 bars

Specifications : Double Antistatic device

ISO 5211 mounting pad

Anti blow-out stem

PTFE filled with 15% glass seat

Full bore

Materials : Carbon Steel ASTM A216 WCB

2 PIECES SPLIT BODY CARBON STEEL BALL VALVES FLANGED CLASS 150 PN20

SPECIFICATIONS :

- Full bore
- Anti blow-out stem
- Double antistatic device
- PTFE filled with 15% glass seat
- Handle with locking device up to DN50 (NPS 2")
- ISO 5211 mounting pad
- 2 pieces type (Split body)
- Hollow ball for DN150 (NPS 6")
- Black anti-corrosive finish, 3-5µ thickness

USE :

- Chemical industries, petrochemical industries, hydraulic installation, heating and water distribution
- Min and max Temperature Ts : -10°C to + 180°C
- Max pressure Ps : 20 bars

RANGE :

- Ball valve with carbon steel body **Ref. 793** from DN 15 to DN 150 (NPS 1/2" to 6")

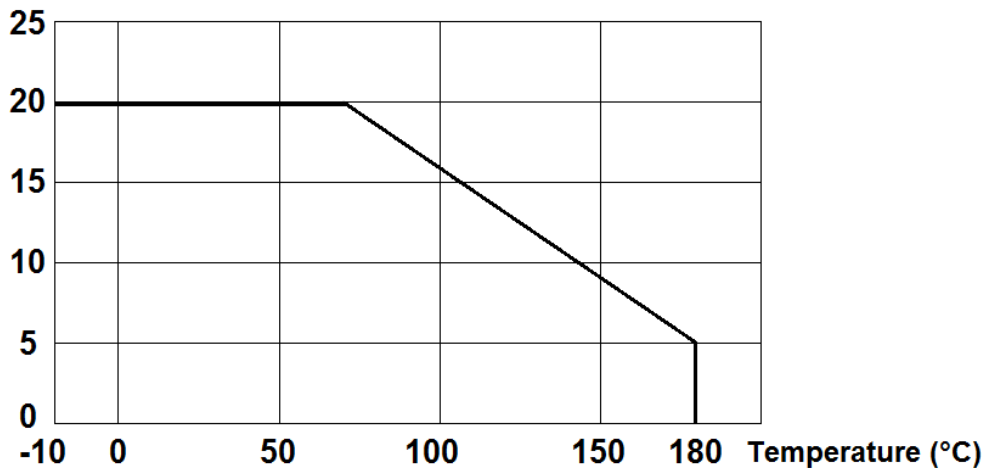
CONNECTION :

- R.F. flanges Class 150 PN20

PRESSURE / TEMPERATURE GRAPH (STEAM EXCLUDED) :

Pressure

(Bar)



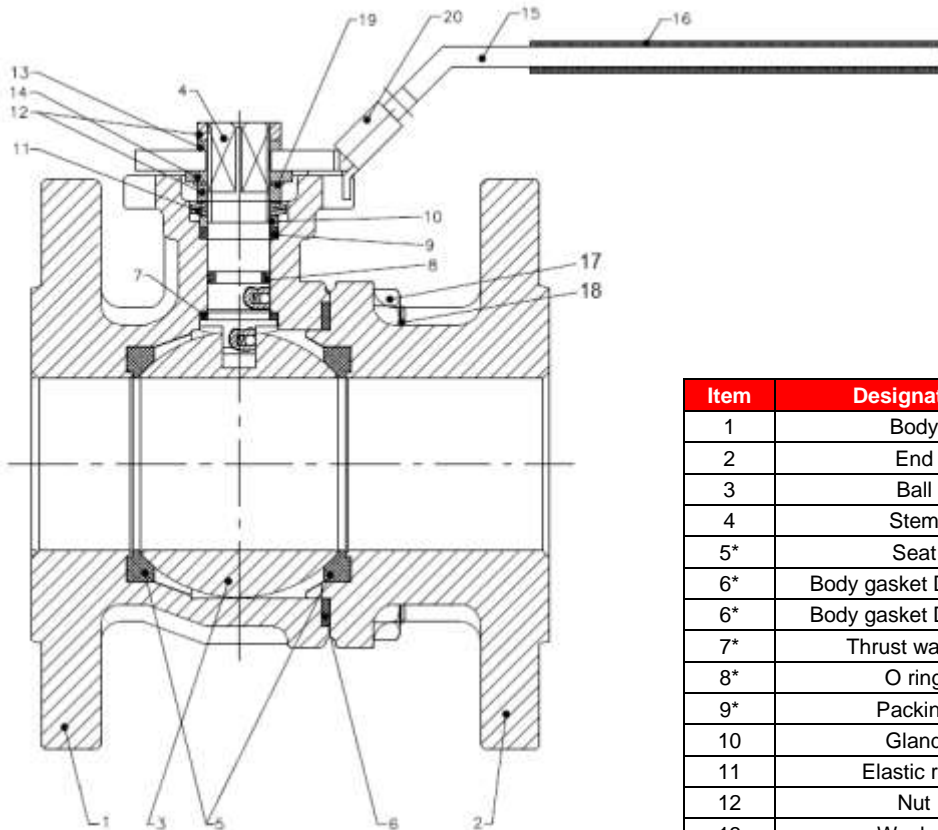
TORQUE VALUES (in Nm without safety coefficient) :

DN (mm)	15	20	25	32	40	50	65	80	100	150
NPS (")	1/2"	3/4"	1"	1"1/4"	1"1/2"	2"	2"1/2"	3"	4"	6"
Torque (Nm)	6	8	10	14	20	30	36	60	95	210

2 PIECES SPLIT BODY CARBON STEEL BALL VALVES FLANGED CLASS 150 PN20

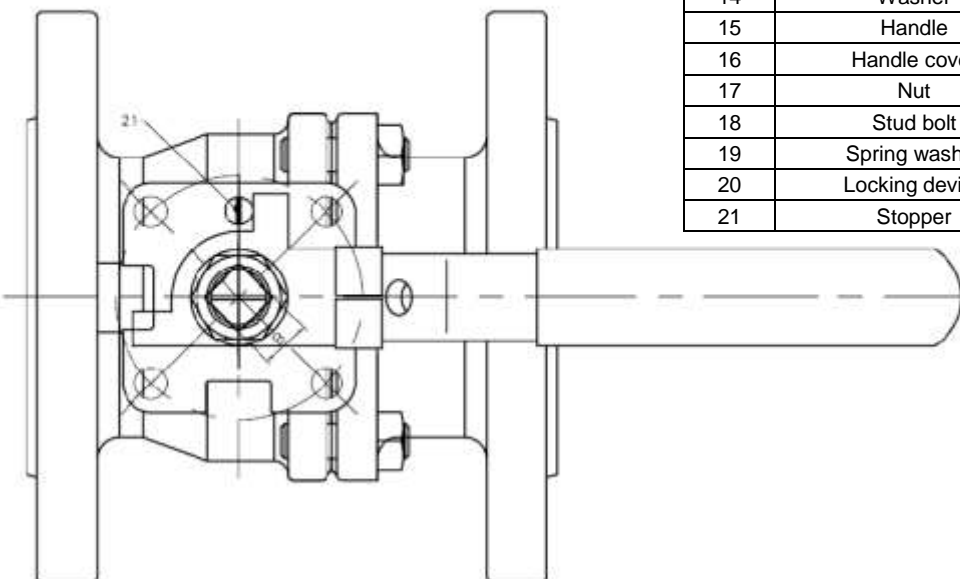
MATERIALS DN 15 – 50 (NPS 1/2" to 2") :

Repairability :



*Gasket kit (items 5, 6, 7, 8 and 9)		
DN (mm)	NPS (")	Ref.
15	1/2"	9804113
20	3/4"	9804113
25	1"	9804114
32	1"1/4	9804115
40	1"1/2	9804116
50	2"	9804117

Item	Designation	Materials
1	Body	ASTM A216 WCB
2	End	
3	Ball	AISI 304
4	Stem	AISI 316
5*	Seat	PTFE filled with 15% glass fiber
6*	Body gasket DN15-32	PTFE filled with 15% graphite
6*	Body gasket DN40-50	AISI 304 + graphite
7*	Thrust washer	PTFE filled with 15% graphite
8*	O ring	FKM
9*	Packing	PTFE
10	Gland	AISI 304
11	Elastic ring	AISI 301
12	Nut	AISI 304
13	Washer	
14	Washer	
15	Handle	Plastic
16	Handle cover	
17	Nut	AISI 304
18	Stud bolt	
19	Spring washer	
20	Locking device	
21	Stopper	



(* : Included in gaskets kit)

2 PIECES SPLIT BODY CARBON STEEL BALL VALVES FLANGED CLASS 150 PN20

MATERIALS DN 65 - 100 (NPS 2"1/2 to 4") :

Repairability :

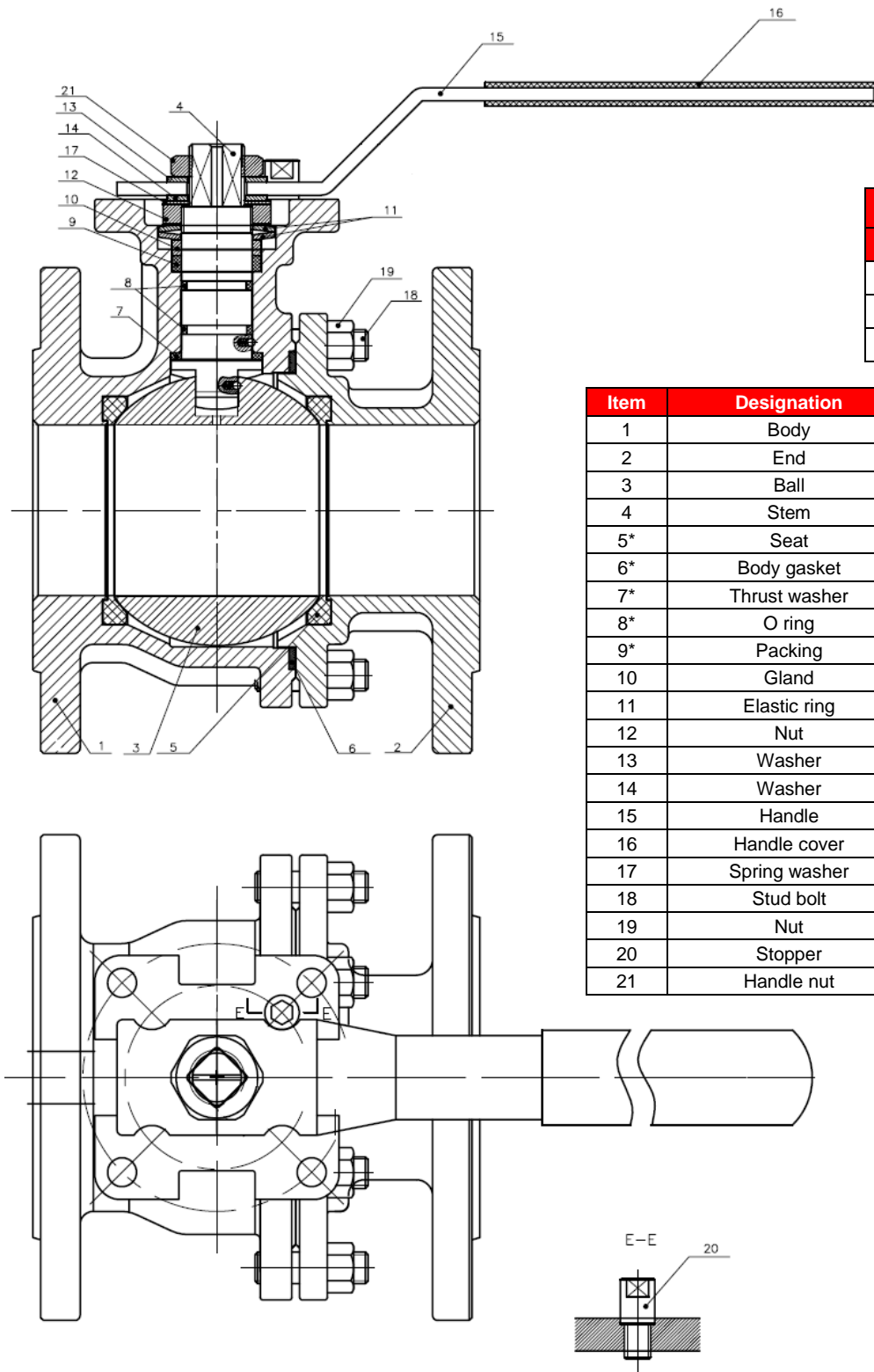


***Gasket kit (items 5, 6, 7, 8 and 9)**

DN (mm)	NPS (")	Ref.
65	2"1/2	9804118
80	3"	9804119
100	4"	9804120

Item	Designation	Materials
1	Body	ASTM A216 WCB
2	End	
3	Ball	AISI 304
4	Stem	AISI 316
5*	Seat	PTFE filled with 15% glass fiber
6*	Body gasket	AISI 304 + graphite
7*	Thrust washer	PTFE filled with 15% graphite
8*	O ring	FKM
9*	Packing	PTFE
10	Gland	AISI 304
11	Elastic ring	AISI 301
12	Nut	AISI 304
13	Washer	
14	Washer	
15	Handle	
16	Handle cover	Plastic
17	Spring washer	AISI 304
18	Stud bolt	
19	Nut	
20	Stopper	
21	Handle nut	

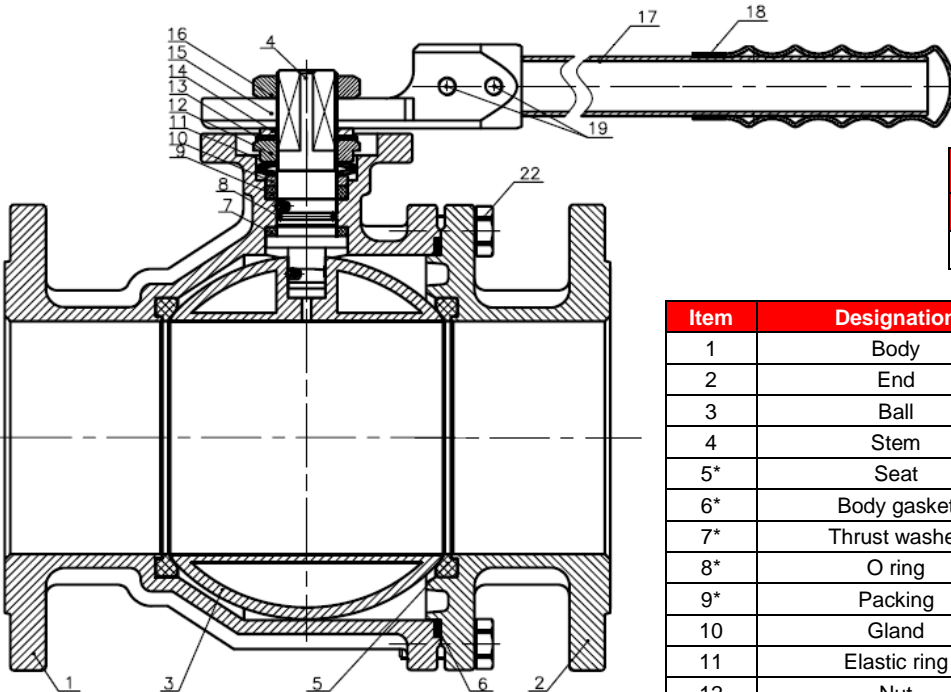
(* : Included in gaskets kit)



2 PIECES SPLIT BODY CARBON STEEL BALL VALVES FLANGED CLASS 150 PN20

MATERIALS DN 150 (NPS 6") :

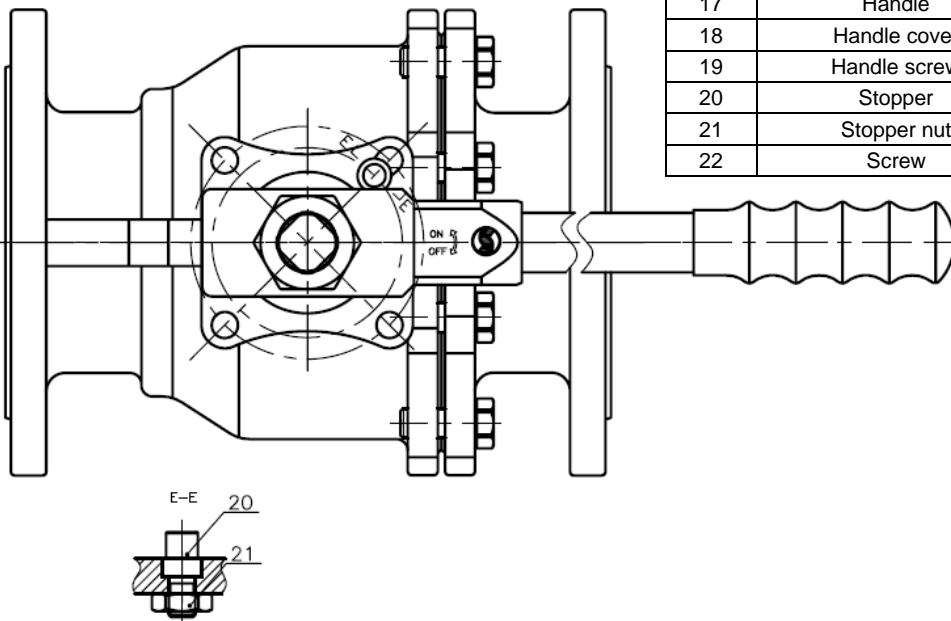
Repairability :



***Gasket kit (items 5, 6, 7, 8 and 9)**

DN (mm)	NPS (")	Ref.
150	6"	9804129

Item	Designation	Materials
1	Body	ASTM A216 WCB
2	End	
3	Ball	AISI 304
4	Stem	AISI 316
5*	Seat	PTFE filled with 15% glass fiber
6*	Body gasket	AISI 304 + graphite
7*	Thrust washer	PTFE filled with 15% graphite
8*	O ring	FKM
9*	Packing	PTFE
10	Gland	AISI 304
11	Elastic ring	AISI 301
12	Nut	ASTM A351 CF8
13	Spring washer	AISI 304
14	Washer	AISI 304
15	Handle adaptor	ASTM A351 CF8
16	Nut	ASTM A351 CF8
17	Handle	AISI 304
18	Handle cover	Plastic
19	Handle screw	AISI 304
20	Stopper	
21	Stopper nut	
22	Screw	

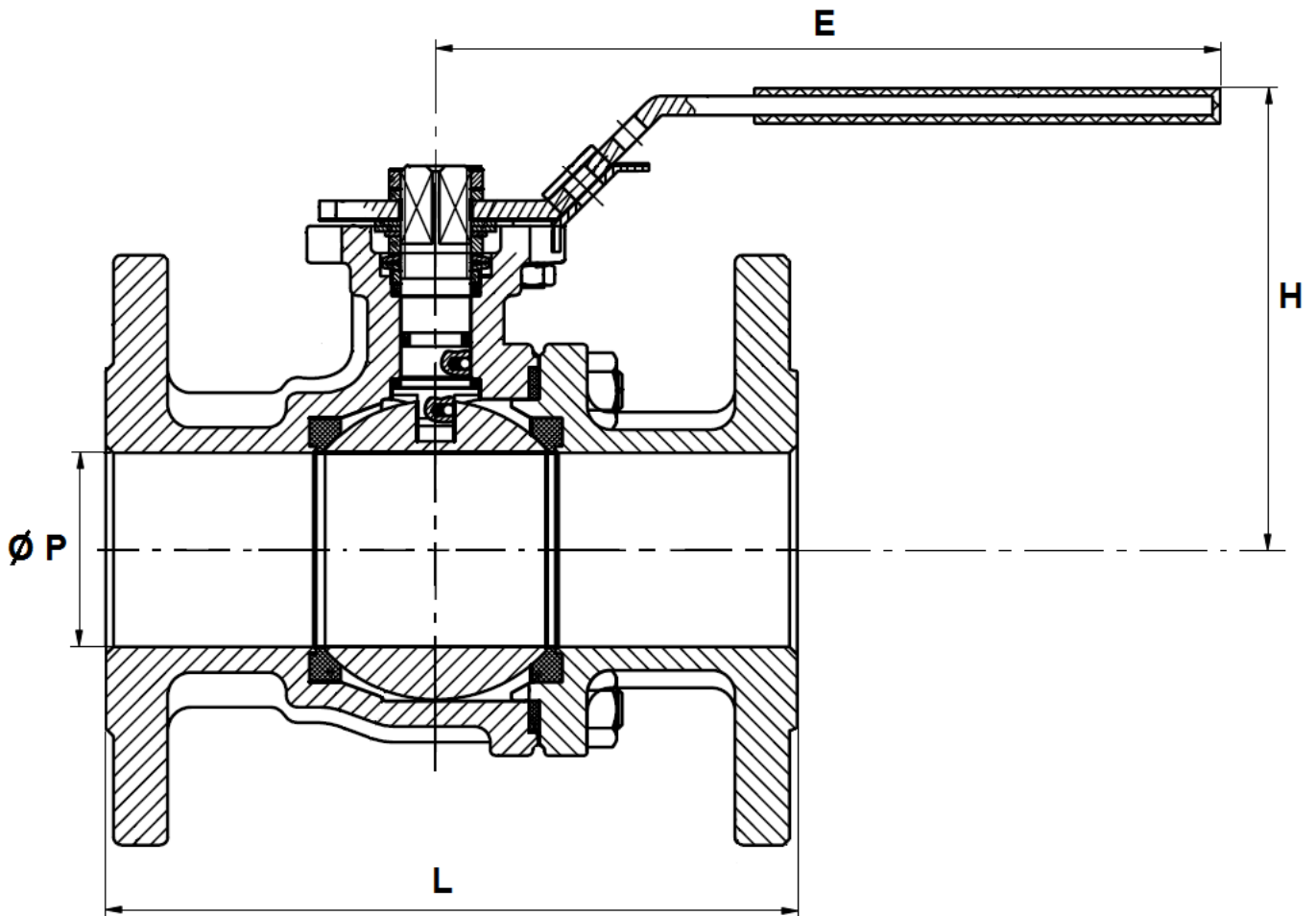


(* : Included in gaskets kit)

2 PIECES SPLIT BODY CARBON STEEL BALL VALVES FLANGED CLASS 150 PN20

SIZE DN 15 – 50 (NPS 1/2" to 2") (in mm) :

DN 15 – 50 (NPS 1/2" to 2")

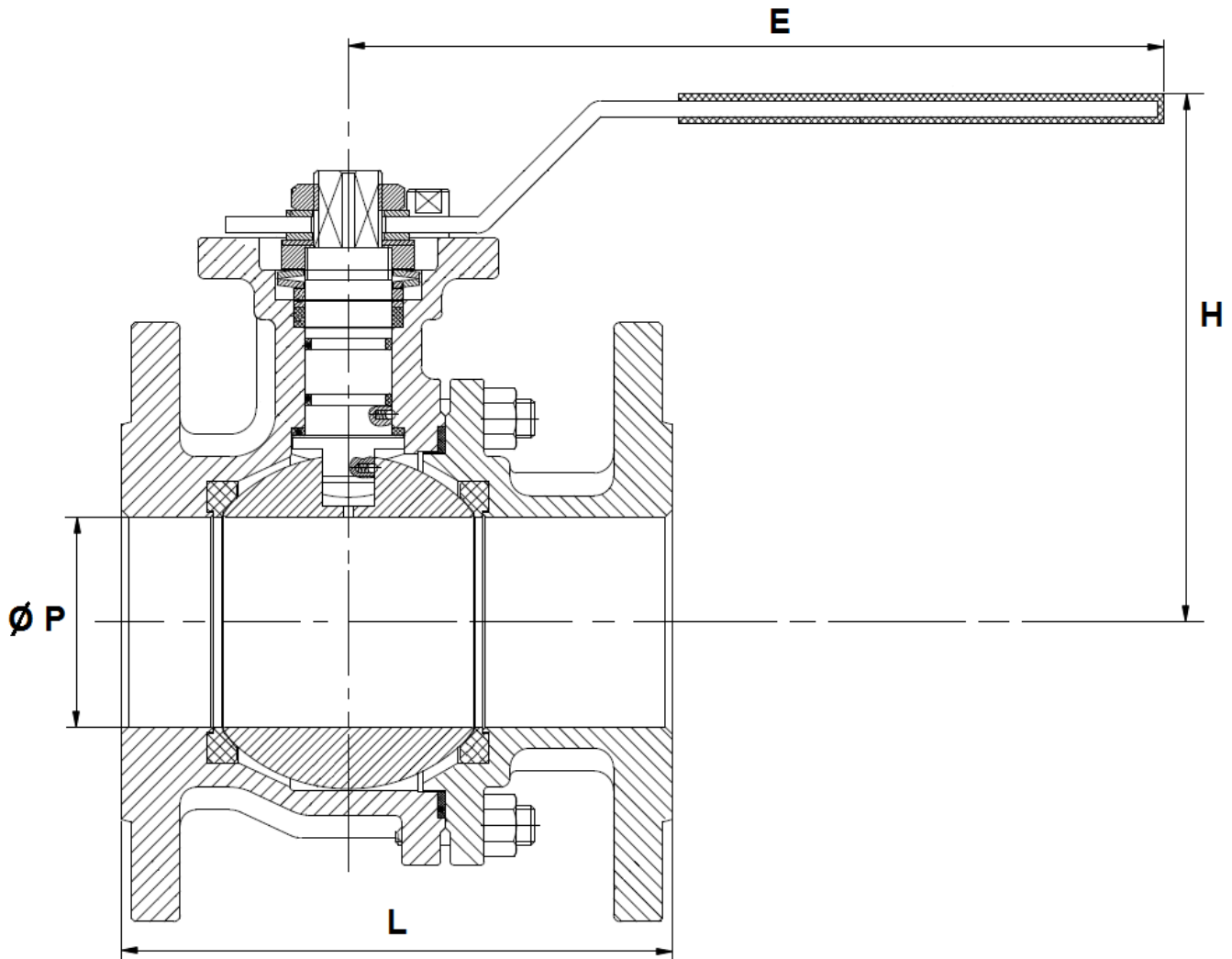


DN (mm)	15	20	25	32	40	50
NPS (")	1/2"	3/4"	1"	1 1/4"	1 1/2"	2"
Ø P	15	20	25	32	40	50
L	108	117	127	140	165	178
E	111.5	137.5	137.5	160	205	205
H	75	82.5	87.5	107.5	108.5	116.5
Weight (in Kg)	1.58	1.84	2.85	4.06	5.48	8.15
Ref.	793015	793020	793025	793032	793040	793050

2 PIECES SPLIT BODY CARBON STEEL BALL VALVES FLANGED CLASS 150 PN20

SIZE DN 65 – 100 (NPS 2"1/2 to 4") (in mm) :

DN 65 – 100 (NPS 2"1/2 to 4")

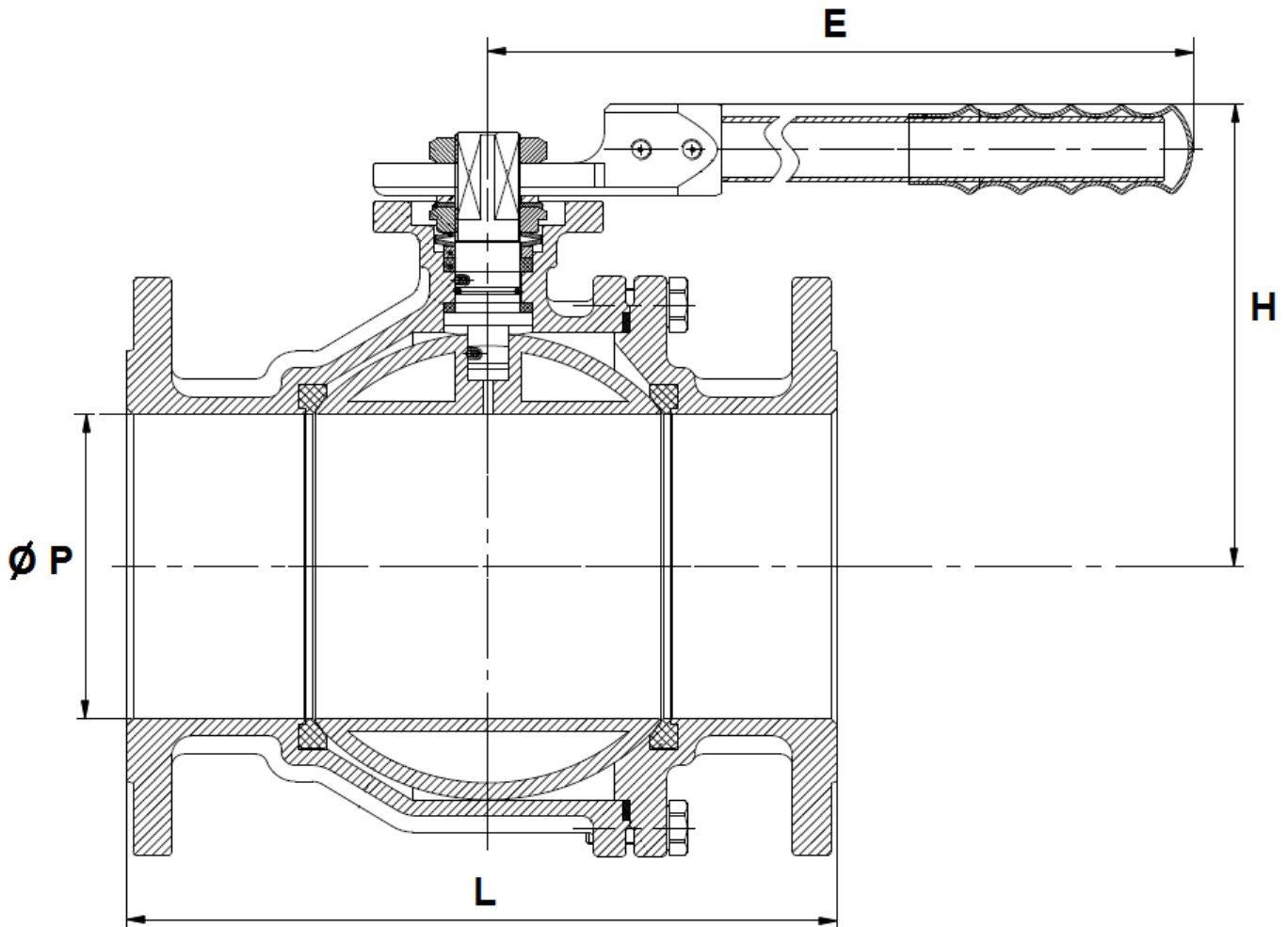


DN (mm)	65	80	100
NPS (")	2" 1/2	3"	4"
Ø P	65	80	100
L	190	203	229
E	323	323	323
H	160	170	186
Weight (in Kg)	15.11	19.22	30.54
Ref.	793065	793080	793100

2 PIECES SPLIT BODY CARBON STEEL BALL VALVES FLANGED CLASS 150 PN20

SIZE DN 150 (NPS 6") (in mm) :

DN 150 (NPS 6")



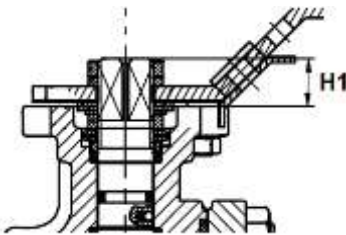
Ref.	DN	150
	NPS	6"
793150	Ø P	150
	L	394
	E	620
	H	228
	Weight (in Kg)	55.8

2 PIECES SPLIT BODY CARBON STEEL BALL VALVES FLANGED CLASS 150 PN20

ISO MOUNTING PAD AND STEM SIZE (in mm) :

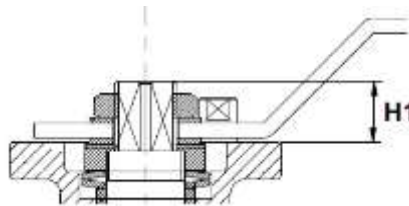
DN 15 – 50

(NPS 1/2" - 2")



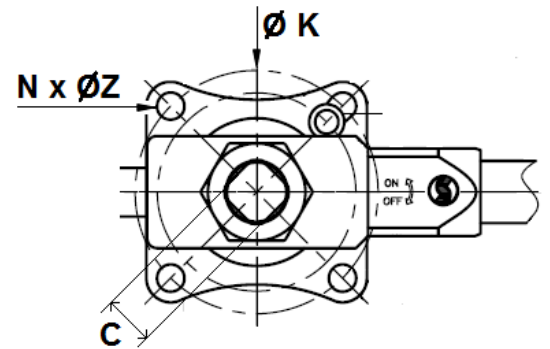
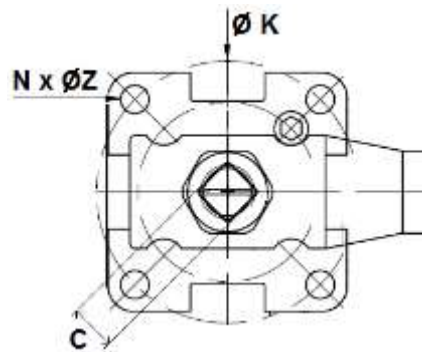
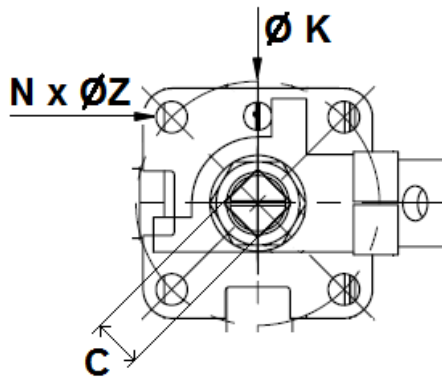
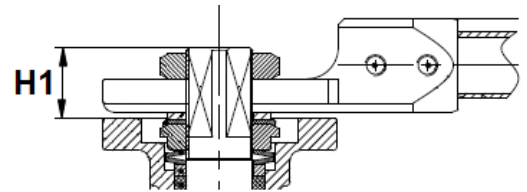
DN 65 – 100

(NPS 2"1/2 - 4")



DN 150

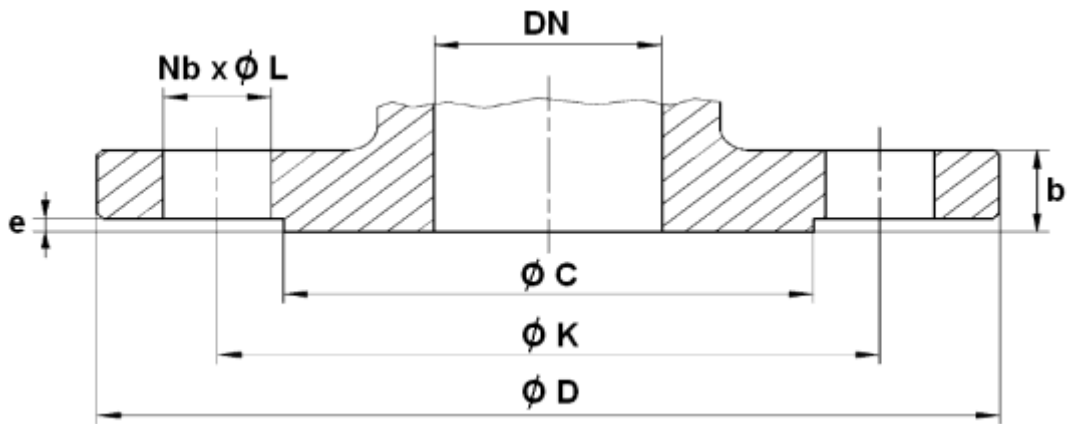
(NPS 6")



DN (mm)	15	20	25	32	40	50	65	80	100	150
NPS (")	1/2"	3/4"	1"	1"1/4	1"1/2	2"	2"1/2	3"	4"	6"
C	9	9	11	14	14	14	17	17	17	27
Ø K	42	42	50	50	70	70	102	102	102	125
ISO	F04	F04	F05	F05	F07	F07	F10	F10	F10	F12
N x Ø Z	4 x 6	4 x 6	4 x 7	4 x 7	4 x 9	4 x 9	4 x 11	4 x 11	4 x 11	4 x 14
H1	11	9	10.5	14.5	14.5	14.5	21	21	21	34

2 PIECES SPLIT BODY CARBON STEEL BALL VALVES FLANGED CLASS 150 PN20

FLANGES SIZE (in mm) :



DN (mm)	15	20	25	32	40	50	65	80	100	150
NPS (")	1/2"	3/4"	1"	1"1/4"	1"1/2"	2"	2"1/2"	3"	4"	6"
Ø C	35	43	51	64	73	92	105	127	157	216
Ø D	89	98	108	117	127	152	178	190	229	279.4
Ø K	60.5	70	79.5	89	98.5	120.5	139.5	152.5	190.5	241.3
Nb x Ø L	4 x 16	4 x 16	4 x 16	4 x 16	4 x 16	4 x 19	4 x 19	4 x 19	8 x 19	8 x 22.2
b	11	11	12	13	15	16	18	19	24	26
e	1.6	1.6	1.6	1.6	1.6	1.6	1.6	1.6	1.6	1.6

2 PIECES SPLIT BODY CARBON STEEL BALL VALVES FLANGED CLASS 150 PN20

STANDARDS :

- Manufacturer certified ISO 9001 : 2015
- DIRECTIVE 2014/68/EU: For liquids or Gas of Group 1
 - DN15-25 (NPS 1/2"-1") : Article 4, §3 (SEP), no CE marking
 - DN32-150 (NPS 1"1/4-6") : Risk category II, CE 0035 marking
- Certificate 3.1 on request
- Design according to API-608
- Designing according to EN 12516-1
- Tests according to API 598, table 6
- Class 150 PN20 R.F flanges according to ASME B16.5
- ISO 5211 mounting pad
- Length according to ASME B16.10 (EN 558 series 3 up to DN100, series 12 for DN150)

ADVICE : Our opinion and our advice are not guaranteed and SFERACO shall not be liable for the consequences of damages.
The customer must check the right choice of the products with the real service conditions.