

CAST IRON GLOBE VALVE HIGH TEMPERATURE FLANGED PN16 DIN 3202-1 F1

Cast iron globe valve flanged PN16 for setting or closing on networks of non-corrosives and non-toxic fluids, steam and high temperature.

Graphite packing and gasket.

Bolted bonnet and packing for an easy maintenance.

Certificate

3.1



PED/2014/68/UE
BUREAU VERITAS
Certification



Size : DN15 to DN200

Connection : Flanged PN16 RF

Min Temperature : -10°C

Max Temperature : +300°C

Max Pressure : 16 bars

Specifications : Rising rotating stem and handwheel
High temperature
Bolted bonnet and packing

Materials : Cast iron body EN GJL-250

CAST IRON GLOBE VALVE HIGH TEMPERATURE FLANGED PN16 DIN 3202-1 F1

SPECIFICATIONS :

- Respect the flow direction (indicated by the arrow)
- Rising rotating stem and handwheel
- Pressed seat
- Bolted bonnet and gland packing
- Flanges R.F. PN16
- Grey painting RAL 7011-7012, 50-100µ thickness

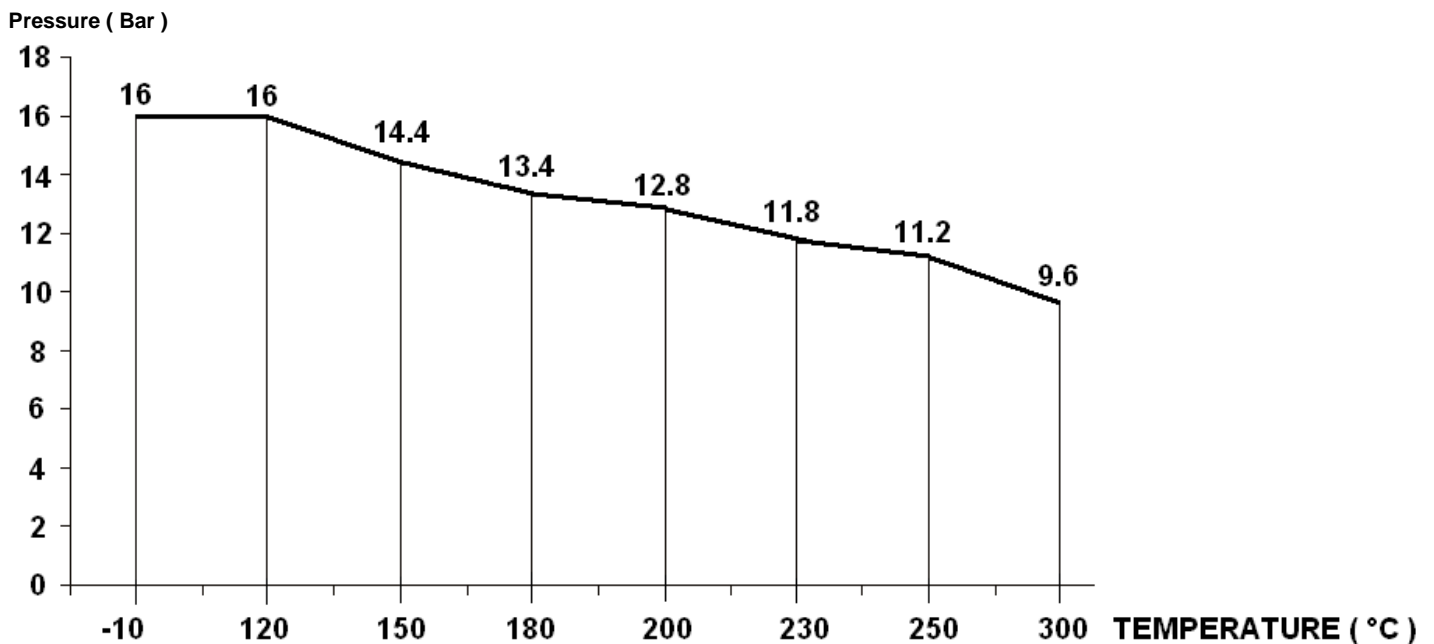
USE :

- For all common fluids of 2nd group
- Min and max Temperature Ts : - 10°C to + 300°C
- Max Pressure Ps : 16 bars (see graph)
- Keep greased the stem
- Do not use for convector fluid
- Tighten the gland packing in service
- **Steam : 10 bars maximum**

FLOW COEFFICIENT Kvs (M3 / h) :

DN	15	20	25	32	40	50	65	80	100	125	150	200
Kvs (m3/h)	5.9	7.4	13	18	30	41	79	115	181	225	364	690

PRESSURE / TEMPERATURE GRAPH :

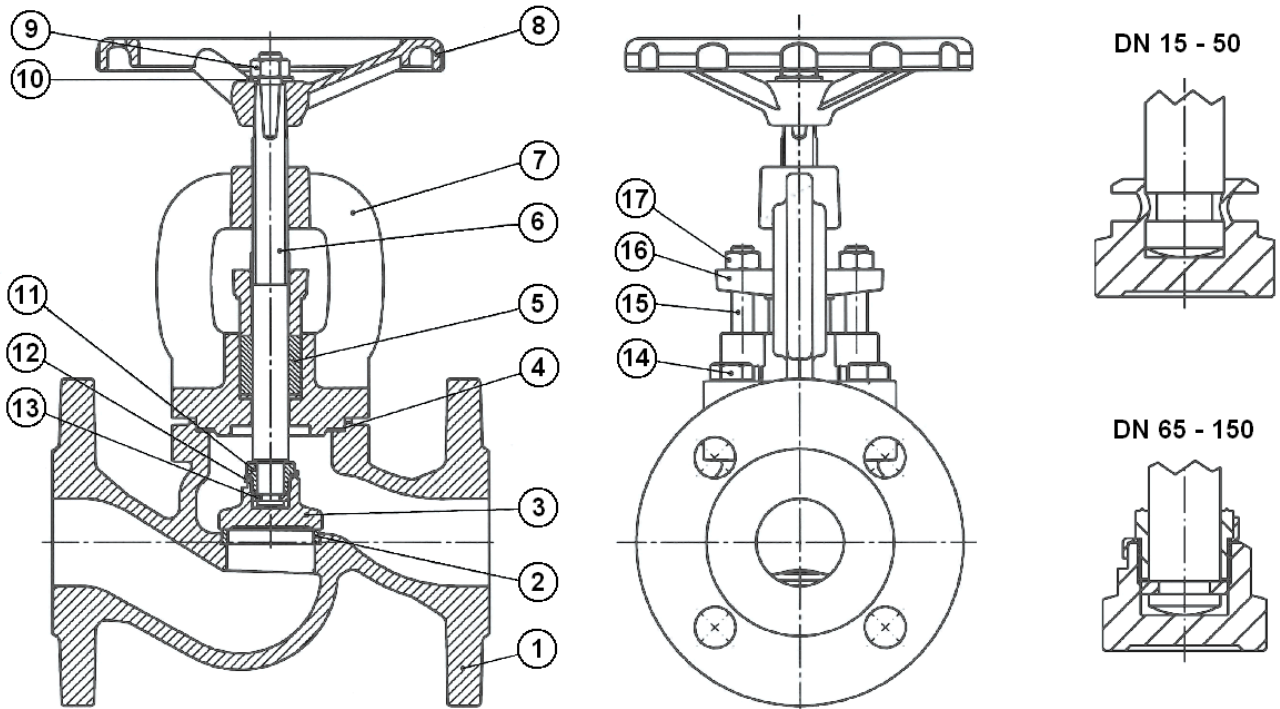


CAST IRON GLOBE VALVE HIGH TEMPERATURE FLANGED PN16 DIN 3202-1 F1

RANGE :

- Globe valve Cast iron flanges R.F. PN16 Ref. 479 DN 15 to DN 200

MATERIALS:

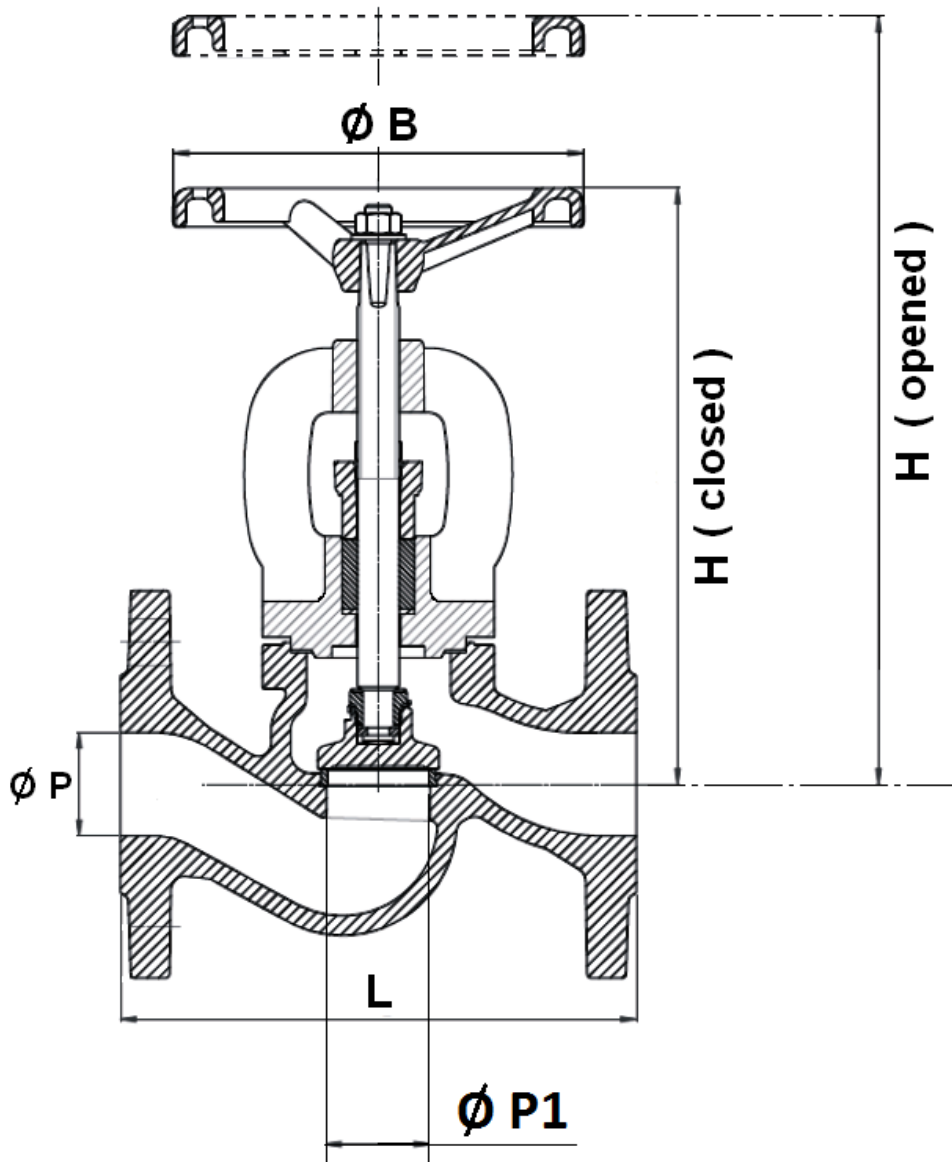


Item	Designation	Materials
1	Body	Cast iron EN GJL-250
2	Seat	SS 410 (1.4006)
3	Disc	SS 420 (1.4021)
4	Bonnet gasket	Graphite + NiCr
5	Gland packing	Graphite
6	Stem	SS 420 (1.4021)
7	Bonnet	Cast iron EN GJL-250
8	Handwheel	Cast iron EN GJS-500-7
9	Handwheel nut	Galvanized steel
10	Washer	Galvanized steel
11*	Disc screw	SS 420 (1.4021)
12*	Disc washer	SS 321 (1.4541)
13*	Ring	SS 420 (1.4021)
14	Hexagon bolt	8.8
15	T bolt	Galvanized steel 5.8
16	Gland	Cast iron EN GJL-250
17	Gland nut	Galvanized steel

* : only for DN 65 to 200

CAST IRON GLOBE VALVE HIGH TEMPERATURE FLANGED PN16 DIN 3202-1 F1

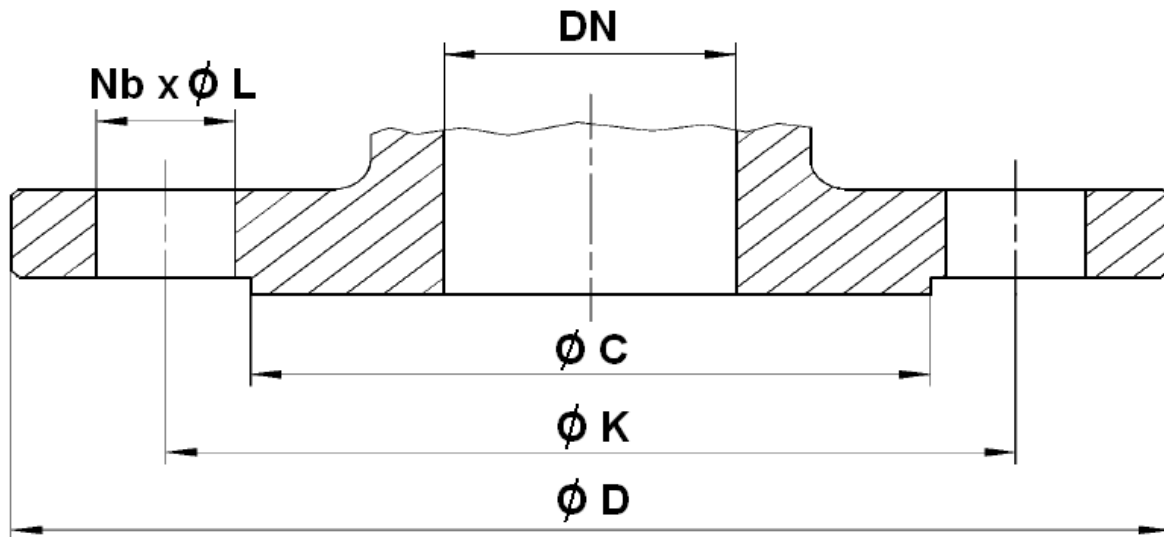
SIZE (in mm) :



DN	15	20	25	32	40	50	65	80	100	125	150	200
Ø P	15	20	25	32	40	50	65	80	100	125	150	200
Ø P1	17	20	25	32	39	50	65	80	100	125	150	200
L	130	150	160	180	200	230	290	310	350	400	480	600
H (opened)	193	194	203	212	263	273	305	344	378	420	483	606
H (closed)	178	180	188	191	235	238	270	297	344	375	429	525
Ø B	100	100	120	120	160	160	180	200	250	250	320	360
Weight (Kg)	3.3	3.9	5	6.6	9.5	12	17.3	22.7	35.8	52.8	72.5	126
Ref.	479015	479020	479025	479032	479040	479050	479065	479080	479100	479125	479150	479200

CAST IRON GLOBE VALVE HIGH TEMPERATURE FLANGED PN16 DIN 3202-1 F1

FLANGES SIZE (in mm) :



DN	15	20	25	32	40	50	65	80	100	125	150	200
Ø C	46	56	65	76	84	99	118	132	156	184	211	266
Ø D	95	105	115	140	150	165	185	200	220	250	285	340
Ø K	65	75	85	100	110	125	145	160	180	210	240	295
Nb x Ø L	4 x 14	4 x 14	4 x 14	4 x 19	4 x 19	4 x 19	4 x 19	8 x 19	8 x 19	8 x 19	8 x 23	12 x 23

CAST IRON GLOBE VALVE HIGH TEMPERATURE FLANGED PN16 DIN 3202-1 F1**STANDARDS :**

- Manufacturer certified ISO 9001 :2015 and ISO 14001 : 2015
- DIRECTIVE 2014/68/EU : CE N° 0062
Risk Category III module H
- Certificate 3.1 on request
- Tests according to EN 12266-1, rate A
- Length according to EN 558 series 1 (DIN 3202-1 F1)
- Flanges R.F. according to EN 1092-2 PN16
- Approval certificate Polish **PZH**
- Russian certification TRCU (marking and declaration EAC on request)

ADVICE : Our opinion and our advice are not guaranteed and SFERACO shall not be liable for the consequences of damages.
The customer must check the right choice of the products with the real service conditions.